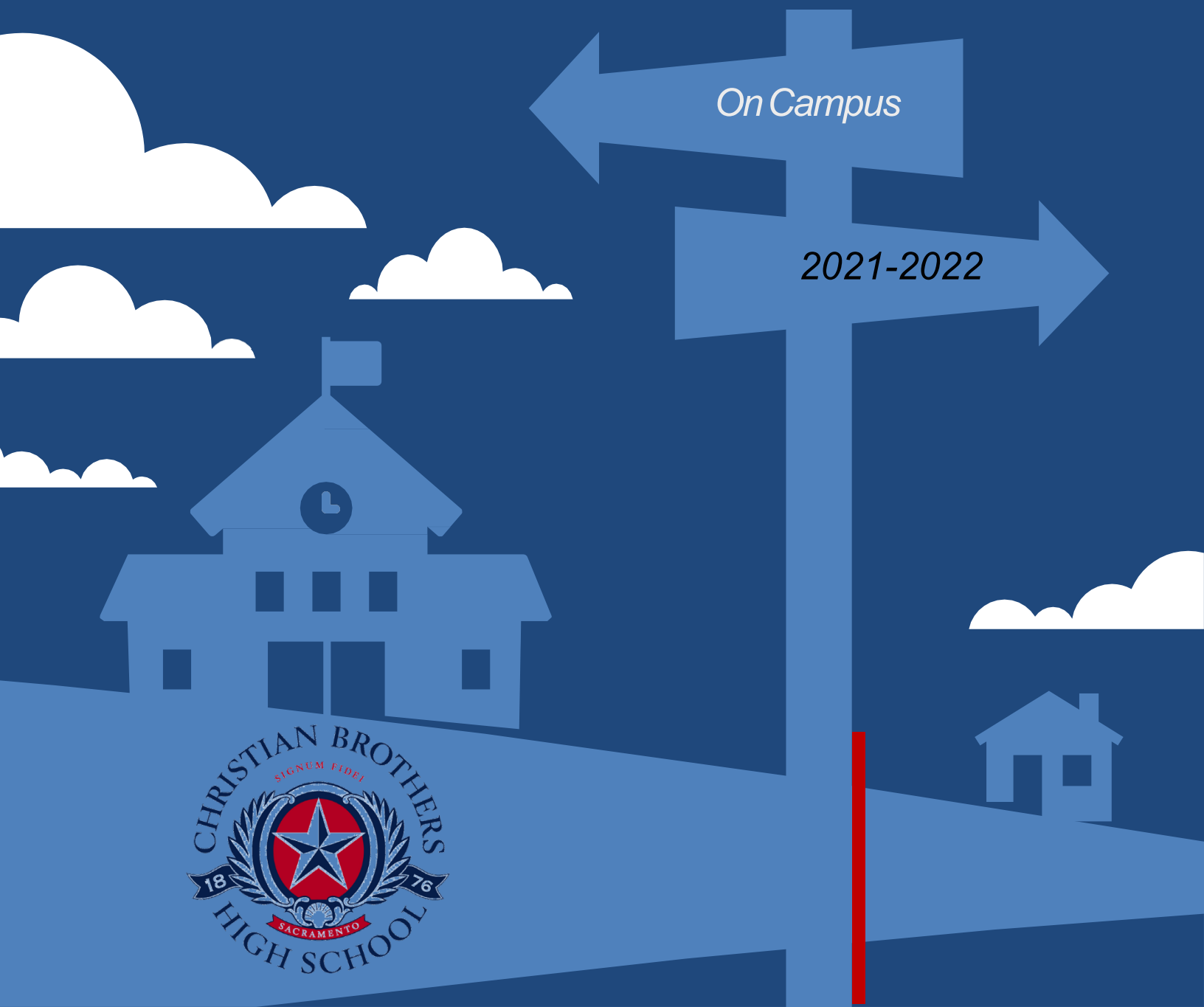


BACK SCHOOL:

An Overview of Safe Return Fall '21



Full Return to On-Campus Instruction

Christian Brothers High School has worked diligently to develop a plan that allows our school to operate in the most relational environment possible under the current circumstances, keeping the health and safety of our community as our number one priority. Flexibility and transparency are hallmarks of our planning process. The community environment experienced at Christian Brothers High School is what makes our school *the place to be*. We are happy to welcome our students to campus for in-person instruction, five days per week. The CB administrative team and faculty will work with families on a case-to-case basis to provide support for students should at-home quarantine be required.

COVID-19 Prevention: Layers of Safety

Vaccinations

Over the past year, Christian Brothers High School has been consistent in implementing and adhering to safety protocols that have kept our school environment from mass outbreaks of COVID-19 and allowed us to affirm that, to date, we have not been a vector of spread. While we are not currently requiring proof of vaccination from students, in line with CDC and CDPH, **we urge all eligible persons to get vaccinated** as soon as possible. Vaccinations are the surest way to stop the virus and reduce the most serious symptoms should it be contracted. Bishop Soto of the Sacramento Diocese has reminded Catholics of Sacramento that the [Congregation for the Doctrine of the Faith](#) at the Holy See and the Doctrine Committee of the [United States Catholic Conference](#) have provided the clergy and faithful with clear teaching that Catholic men and women may receive the COVID-19 vaccine in good conscience.

Face Coverings

Face coverings are mandatory when on campus and are crucial when unable to maintain recommended physical distancing. All persons must wear a mask regardless of vaccination status while indoors. It is recommended and encouraged that mask be worn outdoors as well, especially in crowded situations. During the school day, although six-foot physical distancing will no longer be possible within classrooms, face coverings are always required. Face coverings and gloves will also be worn during engineering classes and science labs.

Individuals are to wear their own face coverings, making sure they adhere to school guidelines regarding respectful dress. Disposable masks will be available in classrooms and at the front office. People with certain medical conditions may exempt with documentation from a medical professional but must wear a face shield with a drape or an approved nonrestrictive alternative.

Symptom Screening

All students, faculty and staff are required to complete a daily health assessment using the ***Safely Back to School*** app on a mobile device prior to arriving on campus each day. Students will need to show the green “pass” icon upon arrival each morning. Individuals who do not pass the assessment may not come to campus. This app complies with contact tracing protocols so that any person(s) who have been less than six-feet from a person known to have COVID-19 can be notified. Login information and instructions for installing the app are shared with incoming freshmen and transfer students at Technology Boot Camp. Visitors to campus will also be required to complete the assessment.

PCR Testing

Weekly PCR testing will be required for all faculty, staff, and students regardless of vaccination status at this time. Testing will be provided by SimpleHealthKit, a social impact organization CB has been partnering with since last year to provide quick and effective self-administered PCR tests with no out of pocket costs to families. Testing will take place weekly during Religious Studies classes.

Sanitation Protocols

Hand-sanitizing stations have been installed across campus. Students, faculty, and staff will be encouraged to wash and sanitize hands regularly. In addition, spray surface sanitizing solution will be available in each classroom. Commonly touched surfaces such as doorknobs, countertops in the reception area, and shared spaces in all the buildings (such as restrooms) will be cleaned on a regular basis throughout the day. Maintenance staff will be sanitizing doorknobs, floors, desks, and chairs on a nightly basis.

Campus Modifications

We have acquired high efficiency level filtration for our AC units. These filters provide much better filtration of air as it passes through our AC system. Plexiglass shields have been set up in office reception areas and Athletics to add another layer of protection. Touchless towel dispensers have been installed in all bathrooms. There is a dedicated recovery room for students who fall sick, exhibit symptoms while on campus, or otherwise need to isolate from other students while on campus.

Quarantine and Isolation

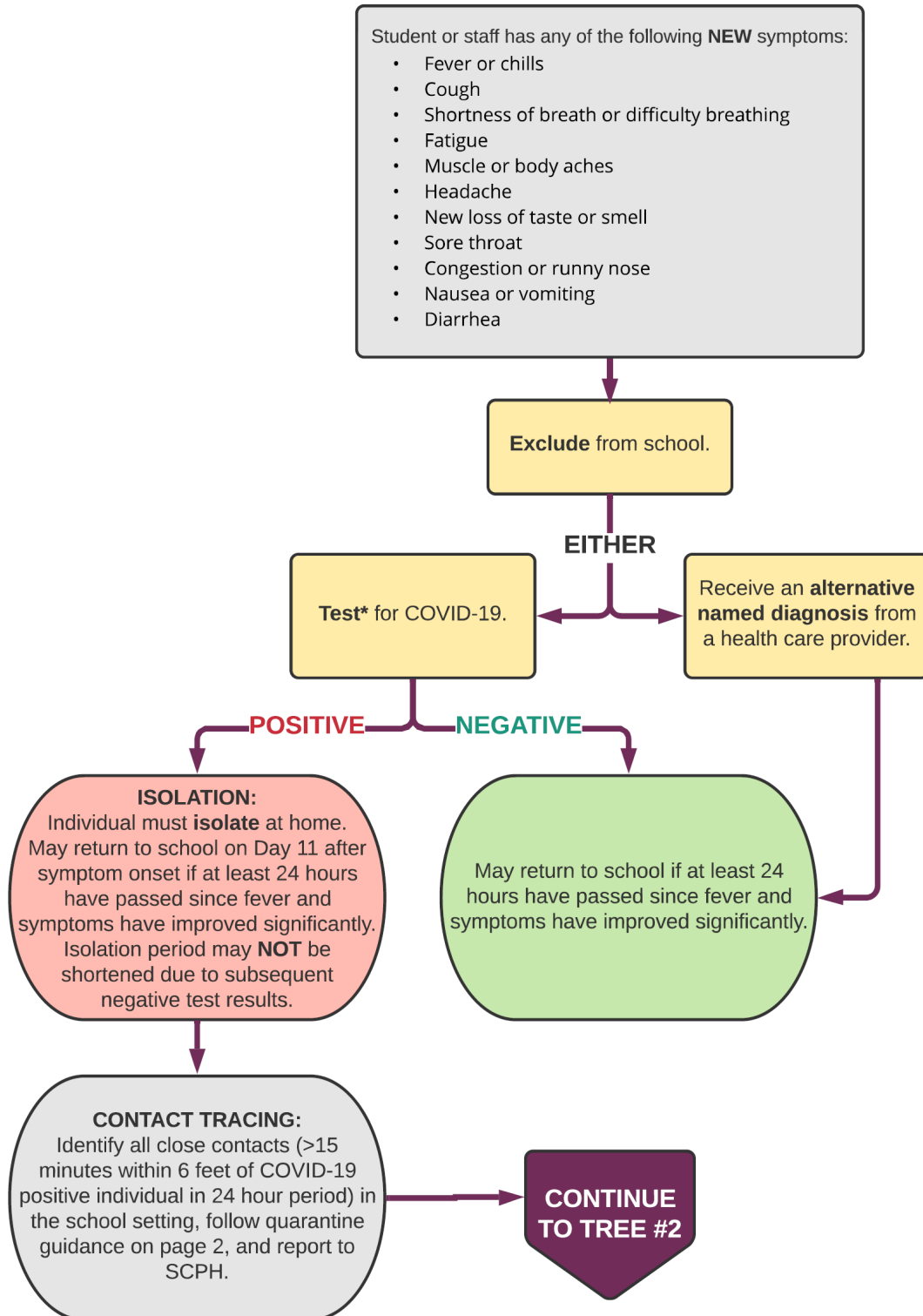
Christian Brothers High School follows the guidelines outlined by the Sacramento County Department of Public Health (SDPH) regarding quarantine and isolation for confirmed COVID-19 cases and exposures. Students and staff who test positive for COVID-19 should take the following steps to protect others regardless of vaccination status: Isolate at home and away from others for at least 10 days. Current COVID-19 symptom and quarantine decision maps from the SDPH are provided in this document.

Preparing for Interruptions

Following the recommendations from state and local health authorities and the CDC, Christian Brothers High School is preparing for possible disruptions to on-campus learning. In the event that we are forced to close campus once again, we will transition to 100% Distance Learning (DLD) and/or the HyFlex model of instruction.

COVID-19 Symptom & Quarantine Decision Forest for K-12 Schools

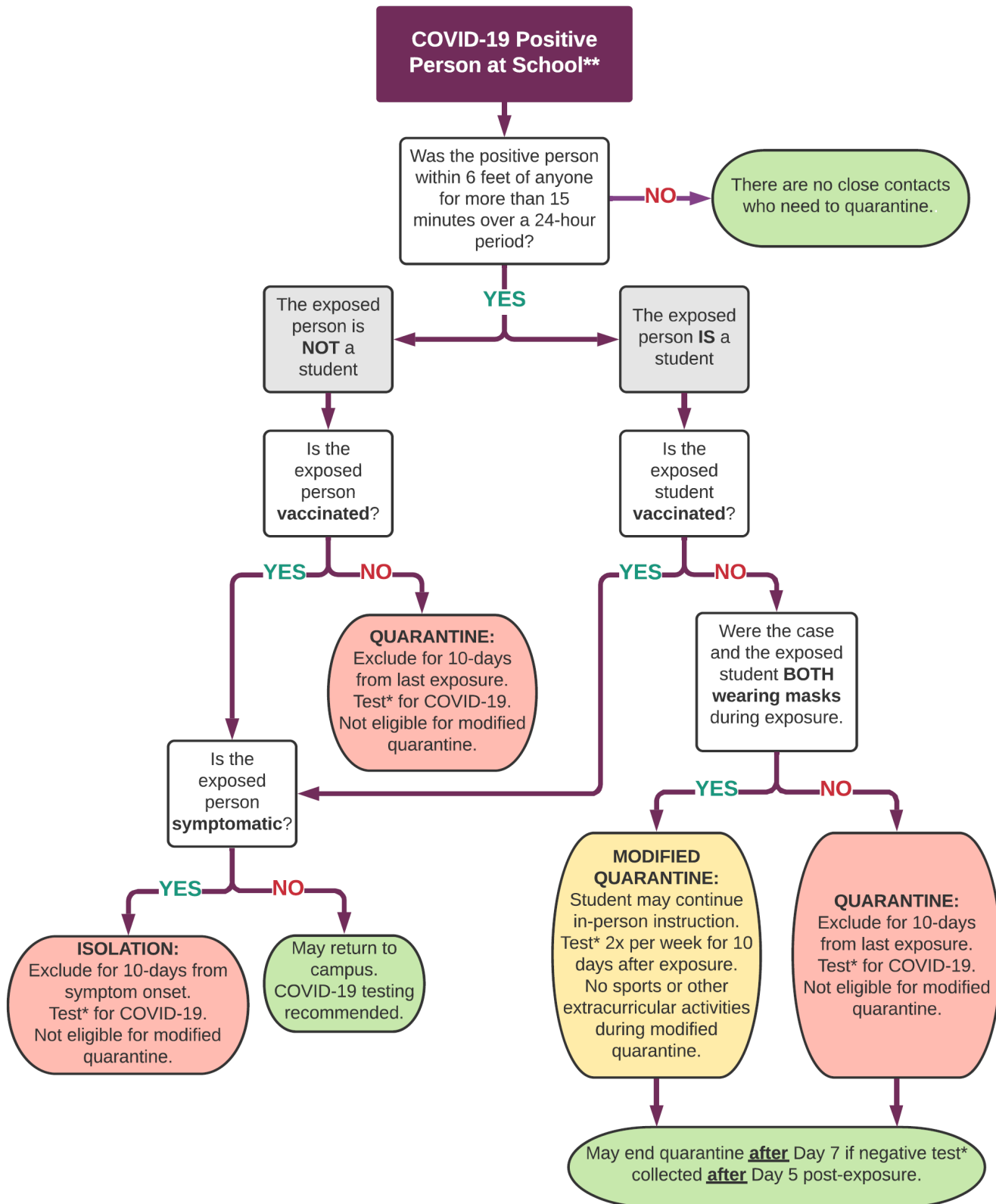
TREE #1: STUDENT OR STAFF WITH SYMPTOMS



* PCR or rapid antigen testing are acceptable testing methods.

** School setting in which students are supervised by school staff, including indoor or outdoor school settings and school buses.
August 17, 2021

TREE #2: COVID-19 POSITIVE PERSON AT SCHOOL**

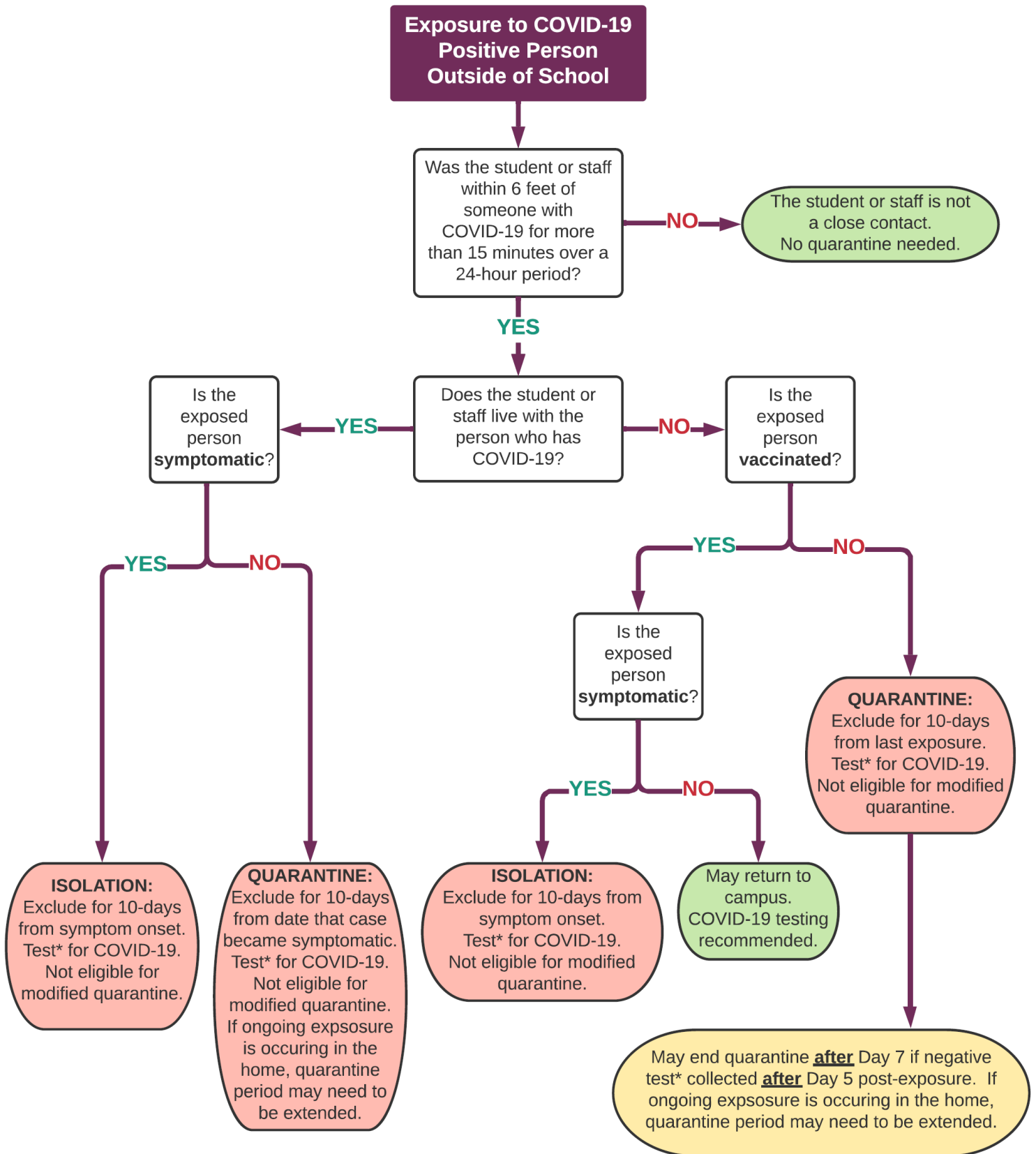


* PCR or rapid antigen testing are acceptable testing methods.

** School setting in which students are supervised by school staff, including indoor or outdoor school settings and school buses.

August 17, 2021

TREE #3: COVID-19 POSITIVE EXPOSURE OUTSIDE OF SCHOOL



* PCR or rapid antigen testing are acceptable testing methods.

** School setting in which students are supervised by school staff, including indoor or outdoor school settings and school buses.

August 17, 2021

SACRAMENTO COUNTY



**PUBLIC
HEALTH**

Promote • Prevent • Protect



Who Can I Call?

Flexibility and transparency are of utmost importance, and we want to encourage you to contact the individual best suited to help you with questions or concerns about how we are serving our community. In addition to CBHS providing continuity of learning for our students, we offer a strong and safe community for your entire family. Please let us know how we are doing.

STUDENT ILLNESS/ABSENCE

- Student Attendance: 916-733-3625

EMPLOYEE ILLNESS/ABSENCE

- Department Supervisor or Supervising Assistant Principal
- Stephanie Harper, Director of Human Resources
916-733-3631

EMPLOYEE WELLNESS

- Employee Assistance
800-386-7055 (Available 24/7)

STUDENT WELLNESS

- Emily McDougall, Wellness Counselor
916-733-3688

STUDENT GRADES

- Grade-level Counselor:
Class of 2024 - Mr. Diaz 916-733-3692
Class of 2022 - Mrs. Gormley 916-733-3613
Class of 2023 - Mr. Purdy 916-733-3686
Class of 2025 - Mr. Riley-Portal 916-733-3678
- College Counselors:
 - Ms. McClellan 916-733-3679
 - Mrs. Melarkey 916-733-3658
- Counseling Office: Mrs. Grajeda 916-733-3680
- Registrar: Mr. Brown 916-733-3632

SCHOOL ADMINISTRATION

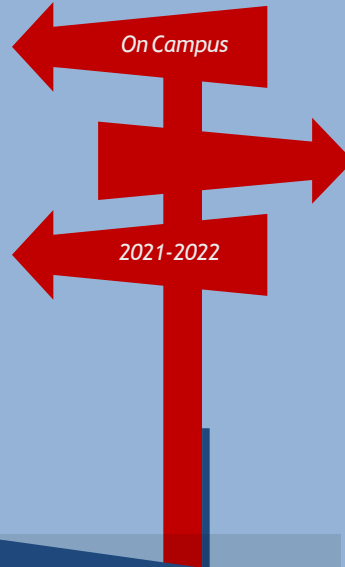
- Dr. Crystal LeRoy, President
916-733-3650
- Annemarie Bacich, Principal
916-733-3674
- Alfredo Acosta, Jr. Assistant Principal of Student Life and Instruction
916-733-3621
- Amanda Pickren, Assistant Principal of Curriculum and Instruction
916-733-3620
- Joe Flores II, Dean of Students
916-733-3605

BUSINESS OFFICE

- Cathy DeVera, Student Accounts Manager
916-733-3644

COMMUNICATIONS TEAM

- Kristen McCarthy, Director of Admissions and Communications 916-733-3695
- Eilleen Le, Assistant Director of Communications
916-733-3622



Questions?

Contact us for more information:
916-733-3600